



Introducing the New
3D Computer Based
4 Wheel Camera
Alignment System

GTR / 8400



Key Features

The Tecalemit GTR/8400 is a powerful 4 camera 3D computer based wheel alignment system for checking and adjustment of car and van wheel alignment. Utilising machine vision software and high precision image targets it is fast, accurate and easy to use

The aluminium camera housing is available in both free standing and wall mounting configuration as required by the workshop layout. Alignment can be carried out either on a lift or over a pit. The 4 x HD cameras (one for each wheel) mounted in the housing provide quick and reliable target capture and high speed image transfer to the PC over TCP/IP

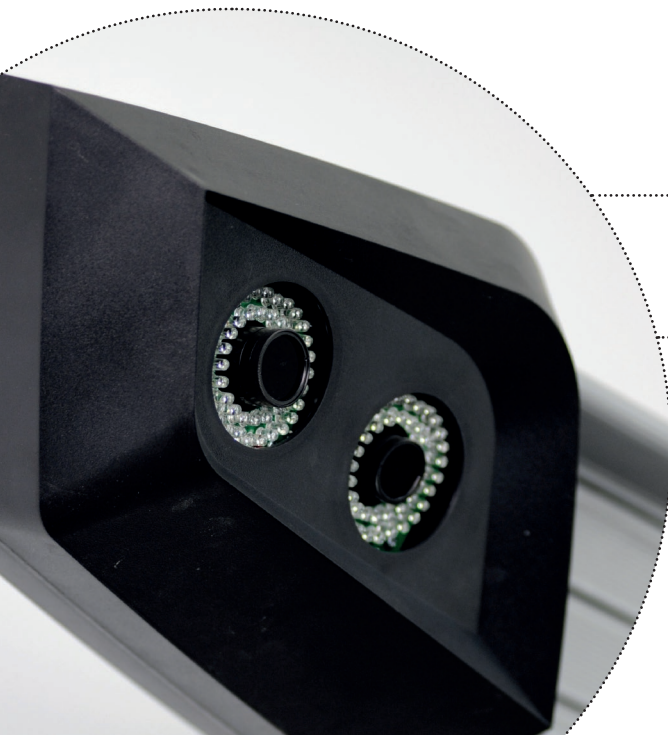
The 4 wide angle cameras provide up to twice the range of working heights compared with 2 camera systems. The cameras can also be positioned closer to the ramp than is possible with 2 camera systems

- Compact and easy-to-handle targets
- Front panel protected with rubberised border
- No electronic components
- No need to calibrate targets

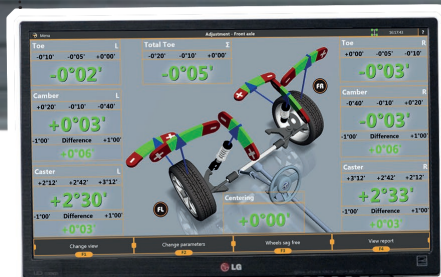
The use of 3D technologies allows high-precision measurements

Special camera firmware promotes a high speed screen refresh

Long -range capability; video camera housing can be installed at a greater distance from the ramp – perfect for wall mounted applications



The integrated monitor bracket for the 27" LCD monitor allows adjustment of the monitor position to provide maximum visibility and ease of operation. The machine vision software is preinstalled on a powerful PC running the latest Windows 10 software



Integrated storage for targets and wheel adaptors on the computer cabinet



The self centering wheel adapter and target is easily mounted at the same time

The GTR/8400 is designed to check and perform wheel alignment on vehicles with 12" to 24" wheels

Technical Information

Camera housing height	2600mm
Min adjustment height	600mm
Max. adjustment height	1700mm
Min. distance from the cameras to the lift/pit	1200mm
Maximum long-range capability	4m
Monitor size	27"
Wheel size range	12" - 24"
Minimum workshop size requirement	6550mm

Measurement	Measurement Range	Tolerance
<i>Front Wheel Alignment</i>		
Camber	$\pm 8^{\circ}$	$\pm 3'$
Front Total Toe	$\pm 5^{\circ}$	$\pm 3'$
Caster	$\pm 19^{\circ}$	$\pm 8'$
SAI / KPI	$\pm 19^{\circ}$	$\pm 8'$
Lock Angle	$\pm 45^{\circ}$	$\pm 10'$
<i>Rear Wheel Alignment</i>		
Camber	$\pm 8^{\circ}$	$\pm 3'$
Rear Total Toe	$\pm 5^{\circ}$	$\pm 3'$
Rear Individual Toe	$\pm 2.5^{\circ}$	$\pm 3'$
<i>Symmetry Angle</i>		
Front Set Back	$\pm 2.5^{\circ}$	$\pm 3'$
Rear Set Back	$\pm 2.5^{\circ}$	$\pm 3'$
Thrust Angle	$\pm 2.5^{\circ}$	$\pm 3'$
Geometrical Driving Axis	$\pm 2.5^{\circ}$	$\pm 3'$

Further Information



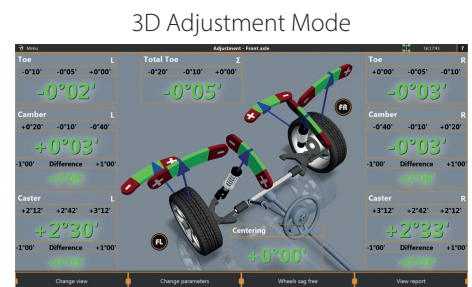
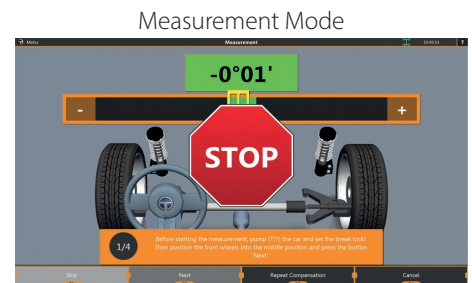
Continuous display of real time measurements and data

Measurements automatically compared with vehicle manufacturers specifications

Easy operation with colour indication of out of specification measurements

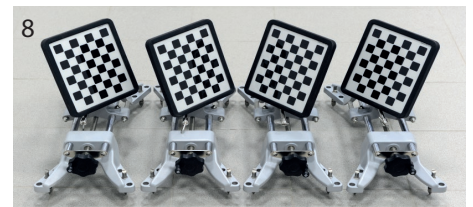
A comprehensive vehicle database covering over 40,000 vehicles is integrated into the operating program. It includes wheel alignment specifications, tyre pressure data, vehicle adjustment diagrams and images together with **3D animated videos**.

These features together with the included electronic help system contain all the information you need to work with your new alignment machine and software. Checking and adjusting any car or van is made fast and easy.



Full Equipment Contents

1. Machine Vision System (4 x HD Cameras)
2. Windows 10 PC with Intel Core I3 processor
3. Computer Cabinet
4. 27" LCD Monitor
5. Universal Telescopic Monitor Bracket
6. Printer, keyboard & mouse
7. Wireless Remote Control and Receiver
8. 4 x Target Sets
9. 4 x Self-Centering Wheel Adaptors
10. Steering Wheel Holder
11. Brake Lock
12. 1 x pair of Turnplates
13. Brackets for integrated storage of wheel adaptors and targets





Tecalemit Garage Equipment

www.tecalemit.co.uk

01752 219111

Unit R2
Eagle Road
Langage Business Park
Plymouth
Devon
PL7 5JY