

# Quadra 5.0t 5.2m Service & MOT Lift



GARAGE EQUIPMENT  
since 1922



**Part No.: SF/9250**

*See overleaf for  
more information*

- 5.0t lifting capacity
- Electronic safety locking system
- 5.2m platform length
- Wide access between columns
- Suitable for Class 4 & 7 MOT Testing

# Quadra 5.0t 5.2m Service & MOT Lift

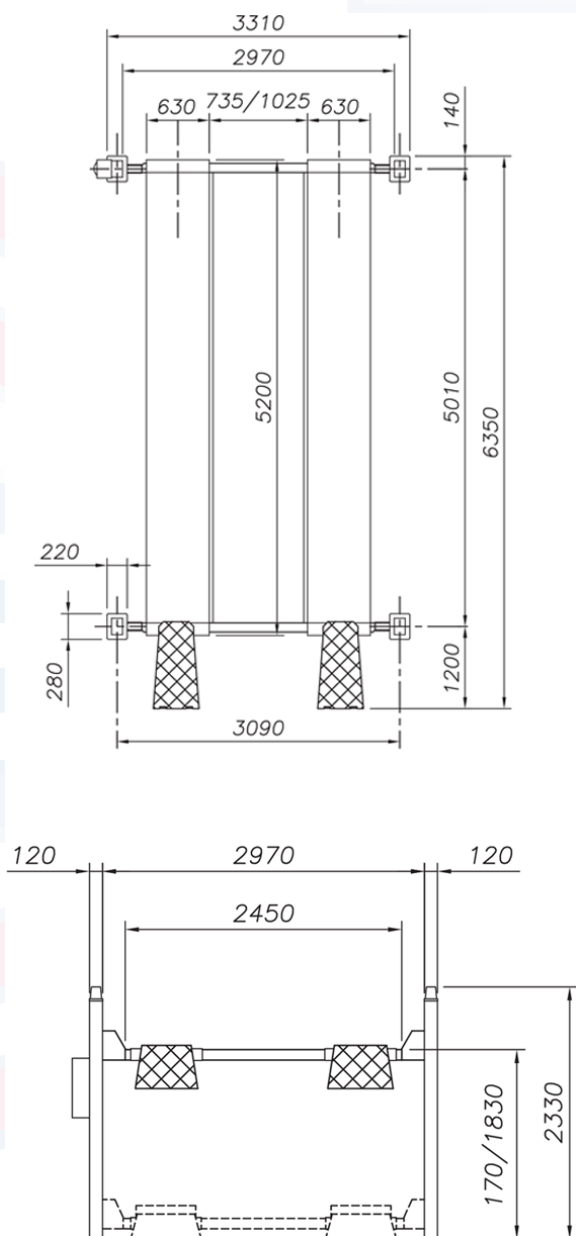


GARAGE EQUIPMENT  
since 1922

## → About the SF/9250

The Quadra SF/9250 is a heavy-duty, light goods vehicle lift with a lifting capacity of 5000kg and platform length of 5200mm, suitable for Class 4 or 7 MOT testing. The extended platform length ensures easy access to all areas of even longer vehicles without obstruction from the lift posts. The wider platforms provide adequate support for twin wheeled vehicles, making the lift ideal for all types of general servicing and repair work.

Installation of the lift should be to a prepared site with a level floor of C30 grade reinforced concrete with a thickness of not less than 160mm. Power supply via a 20 amp fused isolator.



## → Technical Specifications & Dimensions

|                            |               |
|----------------------------|---------------|
| Minimum height.....        | 170mm         |
| Raised height.....         | 1830mm        |
| Motor supply.....          | 2.2kW         |
| Maximum load.....          | 5000kg        |
| Lifting time.....          | 50 secs       |
| Lowering time.....         | 45 secs       |
| Net weight.....            | 1200kg        |
| Power supply.....          | 3ph 400V 50Hz |
| Fused Isolator rating..... | 20 amp        |

## → Part Nos. & Ordering Information

|                                           |           |
|-------------------------------------------|-----------|
| Quadra 5.0t Lift 3ph surface mounted..... | SF/9250   |
| Quadra 5.0t Lift 1ph surface mounted..... | SF/9250/1 |

*\*For recessed installation, add /REC to part number*

## → Options & Accessories

|                                                 |             |
|-------------------------------------------------|-------------|
| 3.0t Jacking Beam (manual).....                 | SS/8839/KIT |
| 3.0t Jacking Beam (pneumatic).....              | SS/8839/P   |
| Air Supply Kit for pneumatic jacking beams..... | OA/62335    |
| 24V LED Lighting Kit.....                       | OA/60342    |
| Drive-through Kit (surface mounted).....        | OA/60579    |
| Drive-through Kit (recessed).....               | OA/60580    |
| Surface-mounted Radius Plates.....              | OA/60348    |
| Class 7 Wheel Chocks (pair).....                | OA/6877     |
| Floor Plate Kit.....                            | OA/60053    |

## Issue No.: SF/9250 Aug 2023

Tecalemit Garage Equipment Co Ltd, Eagle Road, Langage Business Park, Plymouth, United Kingdom PL7 5JY

Sales: 00 44 (0) 1752 219 111  
Service: 00 44 (0) 1752 219 100  
Fax: 00 44 (0) 1752 219 128  
Email: [sales@tecalemite.co.uk](mailto:sales@tecalemite.co.uk)  
Web: [www.tecalemit.co.uk](http://www.tecalemit.co.uk)

All information in this document is correct at time of publication. Tecalemit reserves the right to amend and alter specifications without prior notice. Please confirm any critical requirements with your supplier at time of ordering.

