



Lubrication Equipment



Tecalemit



The pioneers of yesterday The leaders of today

It all started with Lubrication

Emile Piquerez designed a lubrication system with a simple coupler clip, sold under the "Techla" brand. With Joseph Christe, who was the European distributor for the American company "Alemite", they traded Piquerez's patents in exchange for theirs for use in Europe.

Officially established in Paris in May 1922, this was the beginning of the company known as Tecalemit. The name "Tecalemit", a blend of "Techla" and "Alemite", was created to remind buyers that they could find products of both brands from this new company. Tecalemit in the UK started shortly after, with four staff in a small office just off Regent Street, London.

Still leading the way

For over 100 years, Tecalemit has been supplying lubrication equipment to the automotive industry, both as an original equipment supplier to vehicle manufacturers and in the aftermarket for vehicle servicing. Our products can be found in daily use in vehicle workshops worldwide, providing outstanding performance in the most demanding environments.

Today, our range of lubrication equipment is focused on vehicle servicing. It includes well-established, proven Tecalemit products and newer items that are essential for the efficient operation of a modern workshop. We offer a complete range of workshop solutions, including greasing, oil supply, waste oil management, hose reels, and fluid metering systems, alongside our range of vehicle lifts and around-the-wheel equipment.





4 - Pneumatic Oil Pumps

5 - Oil Pump Accessories



6 - Hose Reel Stands & Accessories



7 - Waste Oil Management

8 - Water, Screen-wash, and Coolant/Antifreeze



9 - Pneumatic Grease Pumps

10 - Grease Pump Accessories



11 - Grease Nipples & Hydraulic Connectors

Tecalemit Garage Equipment Co. Ltd.
Eagle Road, Langage Business Park,
Plymouth, Devon PL7 5JY UK

T: 01752 219 111
F: 01752 219 128
E: sales@tecalemmit.co.uk
W: www.tecalemit.co.uk



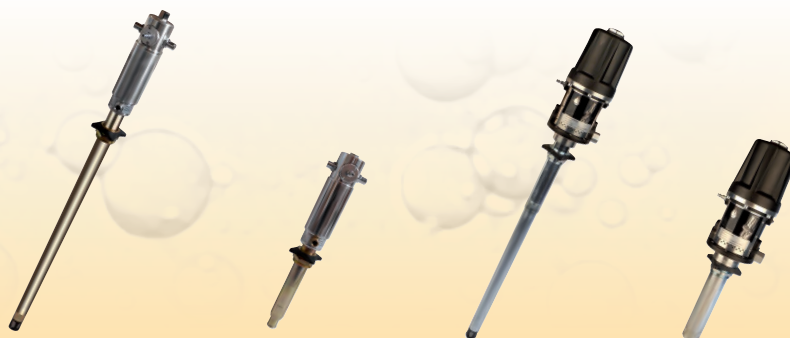
LA/743

Oil valve with electronic meter for dispensing engine, gearbox, and differential oils

Pictures used are for illustrative purposes only and products are not shown at actual size or to scale. Product specifications may be subject to change due to technical and/or safety improvements as required. E & OE. Products available through participating Tecalemit distributors.



Technical Data	OP/500/1/205	OP/500/3/205	OP/500/3/57	OP/500/3
Compression Ratio	1.4:1	3:1	3:1	3:1
Operating Pressure Min/Max	5-10 bar	5-8 bar	5-8 bar	5-8 bar
Flow Rate	48l/min	12l/min	12l/min	12l/min
Air Inlet Connection	1/4" (F)	1/4" (F)	1/4" (F)	1/4" (F)
Oil Outlet Connection	3/4" (M)	1/2" (M)	1/2" (M)	1/2" (M)
Shaft Length	950mm	940mm	730mm	270mm
Shaft Diameter	55mm	42mm	42mm	42mm
Max. Viscosity	SAE 120	SAE 150	SAE 150	SAE 150
Suitable for Drums	180/220l	180/220l	50/60l	Stub Pump
Air Consumption	100l/min	100l/min	100l/min	100l/min
Noise Level	82db	82db	82db	82db
Weight	6.5kg	5.9kg	5.7kg	4.6kg



Technical Data	OP/500/5/205	OP/500/5	OP/500/5HD /MK2/205	OP/500/5HD /MK2
Compression Ratio	5:1	5:1	5:1	5:1
Operating Pressure Min/Max	5-8 bar	5-8 bar	5-12 bar	5-12 bar
Flow Rate	14l/min	14l/min	40l/min	40l/min
Air Inlet Connection	1/4" (F)	1/4" (F)	1/4" (F)	1/4" (F)
Oil Outlet Connection	1/2" (M)	1/2" (M)	3/4" (F)	3/4" (F)
Shaft Length	940mm	270mm	940mm	270mm
Shaft Diameter	42mm	42mm	54mm	54mm
Max. Viscosity	SAE 250	SAE 250	SAE 200	SAE 200
Suitable for Drums	180/220l	Stub Pump	180/200l	Stub Pump
Air Consumption	115l/min	115l/min	600l/min	600l/min
Noise Level	82db	82db	90db	90db
Weight	6.0kg	5.0kg	12.0kg	8.0kg

LA/755

Wall mounting bracket for OP/500/3 & OP/500/5 Stub Pumps



LA/700

830mm Extension Kit for OP/500/3 & OP/500/5 Stub Pumps



LA/708

1.0m Suction probe with 1.5m flex hose for OP/500/3 & OP/500/5 Stub Pumps



LA/704

Air lubricator and pressure regulator with filter 1/4" fittings



LA/702

Air supply hose Inlet / Outlet 1/4" M / 1/4" F Length 1500mm



LA/717

Oil supply hose Inlet / Outlet 1/2" M / 1/2" F Length 2000mm



OR/400

Open oil hose reel Inlet / Outlet 1/2" M / 1/2" F Length 15.0m



LA/742

Oil valve for dispensing engine, gearbox, differential oil and antifreeze



LA/747

Wall-mounted holder and drip tray for dispensing valves



CR/400

Cased oil hose reel Inlet / Outlet 1/2" M / 1/2" F Length 15.0m



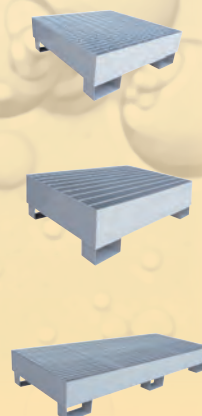
LA/743

Oil valve with electronic meter for dispensing engine, gearbox, and differential oils



2863/X

Oil drum bunds available in a range of capacities for drums or IBC containers



LA/738/COMP

The LA/738 is a bunded two barrel stand incorporating a hose reel frame with oil reels. The stand can be easily positioned with a pallet truck or fork-lift and provides a clean and safe dispensing facility for lubricants.

- Oil bund for 2 x 205 litre drums
- 2 x digital hose end meters
- 2 x guns holder
- 2 x 10m open hose reels
- 2 x pneumatic 3:1 oil pumps for drums
- 2 x oil feed hoses to reels (2.0m)



LA/739

Drum clamp adaptor to lift 180-220kg drums using engine hoist or similar equipment



LA/748

The LA/748 is a self-contained oil extraction and distribution point designed for use in busy vehicle workshops. The stand can accommodate two grades of new oil plus one waste oil container.



SL/718

80 litre
combined
gravity &
vacuum
drainer

SL/700

80 litre oil
drainer
blow away
pressurised
tank



SL/701

24 litre suction
only oil drainer



SL/715

80 litre oil
drainer with
dipstick
suction



SL/719

80 litre
pantograph
oil drainer
with dipstick
suction



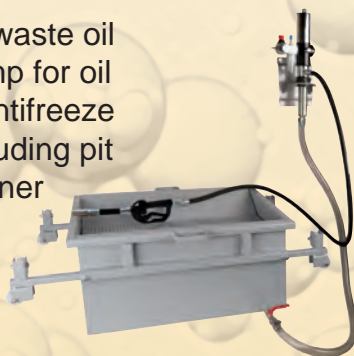
SL/9001/B

Oil drainer
80 litre pump
away



OP/1841K3P

Pit waste oil
pump for oil
& antifreeze
including pit
drainer



LA/768

Wall mounted
oil suction unit
with pump &
10 metre open
hose reel



SL/721

Mobile oil drainer
68 litre capacity



SL/720

Mobile oil drainer with integral
pump 55 litre capacity



SL/710

Waste oil drain tray 30 litre
capacity 125mm height



OP/500/3X205

3:1 Stainless Steel Pump for Antifreeze or screen-wash. 940mm shaft for 205l drums



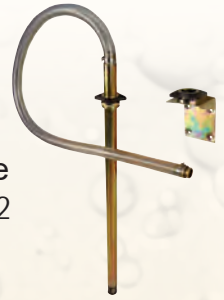
OP/500/3X2

3:1 Stainless Steel Pump for Antifreeze or screen-wash. Wall mountable stub pump



LA/708

1.0m Suction probe with 1.5m flex hose for OP/500/3X2 Stub Pump



OR/401

Open water/air hose reel Inlet / Outlet 3/8" F / 3/8" M Length 15.0m



CR/401

Cased water/air hose reel Inlet / Outlet 3/8" F / 3/8" M Length 15.0m



LA/746

Control valve with electronic meter for dispensing water, screen-wash, and antifreeze



SL/706

Mobile antifreeze drainer 55 litre capacity



CR/401/CG

Cased water reel 20m 3/4" domestic/wash only



25751/104

Radiator / windscreen washer fluid bottle filler



SA/8026

Hurricane Wash Gun



25711/57

'Y' in-line strainer 3/4" BSP



OA/9793/103

Quick-fix coupler kit





Technical Data	GP/502/50/330	GP/502/50/480	GP/502/50/740	GP/502/50/940	GP/502/50/1780
Compression Ratio	50:1	50:1	50:1	50:1	50:1
Operating Pressure Min/Max	5-8 bar	5-8 bar	5-8 bar	5-8 bar	5-8 bar
Flow Rate	800g/min	800g/min	800g/min	800g/min	800g/min
Air Inlet Connection	1/4" (F)	1/4" (F)	1/4" (F)	1/4" (F)	1/4" (F)
Grease Outlet Connection	1/4" (M)	1/4" (M)	1/4" (M)	1/4" (M)	1/4" (M)
Shaft Length	330mm	480mm	740mm	940mm	740mm
Shaft Diameter	30mm	30mm	30mm	30mm	30mm
Max. Viscosity	NLGI 2	NLGI 2	NLGI 2	NLGI 2	NLGI 2
Suitable for Drums	16-20kg	20-30kg	50-60kg	180-200kg	50-60kg
Air Consumption	120l/min	120l/min	120l/min	120l/min	500l/min
Noise Level	82db	82db	82db	82db	82db
Weight	4.8kg	5.4kg	5.5kg	6.0kg	-



Technical Data	MGP/502/20	MGP/502/60	MGP/502/180	MGP/502/200
Compression Ratio	50:1	50:1	50:1	65:1
Operating Pressure Min/Max	5-8 bar	5-8 bar	5-8 bar	5-8 bar
Flow Rate	800g/min	800g/min	800g/min	1800g/min
Air Inlet Connection	1/4" (F)	1/4" (F)	1/4" (F)	1/4" (F)
Grease Outlet Connection	1/4" (M)	1/4" (M)	1/4" (M)	3/8" (F)
Cover Diameter	280mm	385mm	600mm	600mm
Follower Plate Diameter	265mm	370mm	585mm	585mm
Max. Viscosity	NLGI 2	NLGI 2	NLGI 2	NLGI 2
Suitable for Drums	12-20kg	50-60kg	180-200kg	180-200kg
Air Consumption	120l/min	120l/min	120l/min	500l/min
Noise Level	82db	82db	82db	82db
Weight	21.0kg	25.0kg	38.0kg	39.0kg

LA/737

Grease control gun 1/4" (F)
rigid and flexible tubes



Drum Covers

All with 3 wing nut clamps,
2 carry handles & riser tube
clamp



LA/718

280mm for 12-20kg drums

LA/720

420mm for 50-60kg drums

LA/721

600mm for 180-200kg drums

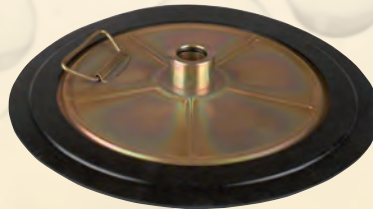
LA/735

Z Swivel 1/4" (M/F) for
connection between hose
and gun



Follower Plates

All with double rubber
membrane and double
internal 'O' ring seals



LA/723

265mm for 12-20kg drums

LA/724

370mm for 50-60kg drums

LA/725

585mm for 180-200kg drums

Grease Delivery Hose

1/4" (M/F) for connection
between pump and gun



LA/731

Length 1000mm

LA/732

Length 2000mm

LA/733

Length 3000mm

LA/734

Length 6000mm

LA/763

400g Side
lever grease
gun with rigid
and flexible
delivery tubes



OR/402

Open grease
hose reel
Inlet / Outlet
1/4" F / 1/4" M
Length 15.0m



CR/402

Cased grease
hose reel
Inlet / Outlet
1/4" F / 1/4" F
Length 15.0m



LA/760

400g One-handed operation
grease gun with rigid and
flexible delivery tubes



Grease Nipples & Grease Gun Connectors



Grease Nipples	
UNF Threads	Sold in 100s
1/4" x 28 UNF Straight	NA/6708
5/16" x 24 UNF Straight	NA/6627
3/8" x 24 UNF Straight	NA/6629



Drive Fit	Sold in 100s
1/4" Drive Fit	NA/5766
8mm Drive Fit	98423/3001



TAT - Standard Button Head	Sold in 100s
1/8 x 28 BSPF	NB/5962/103
1/4 x 19 BSPF	NB/5976/101
1/8 x 28 BSPF	NB/5959
1/4 x 19 BSPF	NB/5975



Industrial Button Head	Sold in 100s
1/8 x 28 BSPF	ND/6172
1/4 x 19 BSPF	ND/6160
3/8 x 19 BSPF	ND/6161



Metric Threads	Sold in 100s
M6 x 1mm Straight	NA/7006
M6 x 1mm 45° Angle	NA/7206
M6 x 1mm 90° Angle	NA/7106
M8 x 1mm Straight	NA/7007
M8 x 1mm 45° Angle	NA/7207
M8 x 1mm 90° Angle	NA/7107
M8 x 1.25mm Straight	NA/7008
M8 x 1.25mm 45° Angle	NA/7208
M8 x 1.25 90° Angle	NA/7108
M10 x 1mm Straight	NA/7009
M10 x 1mm 45° Angle	NA/7209
M10 x 1mm 90° Angle	NA/7109
M10 x 1.5mm Straight	NA/7010
M10 x 1.5mm 45° Angle	NA/7210
M10 x 1.5mm 90° Angle	NA/7110



BSP Threads	Sold in 100s
1/8 x 28 BSPT	NA/5704
1/8 x 28 BSPT 45° Angle	NA/5797
1/8 x 28 BSPT 67.5° Angle	NA/5799
1/8 x 28 BSPT 90° Angle	NA/5803
1/4 x 19 BSPT Straight	NA/5707/1
1/4 x 19 BSPT 45° Angle	NA/5805/1
1/4 x 19 BSPT 90° Angle	NA/5813



BSF Threads	Sold in 100s
1/4" x 26 BSF Straight	NA/5700/1
1/4" x 26 BSF 45° Angle	NA/5809/1
1/4" x 26 BSF 90° Angle	NA/5792/1
5/16" x 22 BSF Straight	NA/5702/1
5/16" x 22 BSF 45° Angle	NA/5793/1
5/16" x 22 BSF 90° Angle	NA/5795/1
3/8" x 20 BSF Straight	NA/5706/1
3/8" x 20 BSF 45° Angle	NA/5801/1



American Pipe Threads	Sold in 100s
1/8 x 27 PTF Straight	NA/6511
1/8 x 27 PTF 45° Angle	NA/6672
1/8 x 27 PTF 65° Angle	NA/6674
1/8 x 27 PTF 90° Angle	NA/6613



SAE-LT Threads	Sold in 100s
1/4" x 28 Straight	NA/6639
1/4" x 28 45° Angle	NA/6666
1/4" x 28 90° Angle	NA/6626



Grease Gun Connectors	
L Type	HF/4006/1
Hook-On Type B	HF/4016
Giant Button Head Hook-On Type N	HF/4020
Hydraulic 4 Jaw Type H	HF/4048/103
K Type	HF/4063
Swivel Connector 1/8 BSPF	HE/3913
Grease Gun/Pipe Connector 1/8 BSP	28916/1
B Type including reducing nipple	HF/4016/101



Have you a vacancy FOR A MAN WITH THESE QUALIFICATIONS?



If so - here he is

In other words, is there scope in your works for Tecalemit Lubrication? There probably is because as a result of years of research, experiment and development, there is no industrial lubricating problem upon which Tecalemit are not fully qualified to advise and few to which Tecalemit lubrication — fully, semi-automatic or manually operated — cannot be applied with resultant reduction in wear and tear and consequent lessening of overheads.

Tecalemit's wide experience and their advice are fully at the disposal of British Industry.



LUBRICATION AND SERVICING EQUIPMENT