



#### PRODUCT PACKAGE INCLUDES:

- ▶ TFT video display
- ▶ Wheel protection cover
- ▶ Mechanical centering flange
- ▶ 3 Cones
- ▶ Weight plier
- ▶ Calibration weight
- ▶ Measurement calipers

## TBM V985A & TBM V985AE WHEEL BALANCER

>> Electronic Wheel Balancer with Internal (& optional external) measuring system

### ABOUT THE TBM V985A AND TBM V985AE

The Tecalemit TBM/V985A is a semi-automatic electronic wheel balancer and has been developed to meet the need for highly accurate wheel balancing for workshops where there is not a high throughput of wheels. The internal wheel positioning is measured automatically and other wheel dimensions are entered manually.

The wheel balancer is also available with an optional data entry arm (TBM/V985AE) making the machine fully automatic. The internal wheel positioning and other wheel dimensions are measured automatically.

Wheel data and balancing results are clearly displayed on a large TFT video display. The software provides programs for all 'Alloy' wheel balancing as well as steel wheels, static and hidden weight balancing programs.

The wheel balancer is easy to use with a very quick balancing cycle and manufactured in our own factory near Modena, Italy using the best materials and technology available.



Tecalemit offer the Haweka range of balancing adapters to improve balancing accuracy and reduce balancing times.

### FEATURES:

- ▶ Space saving foot print design
- ▶ Ergonomic wheel cover
- ▶ Accommodates wheels up to 31.5" diameter
- ▶ Maximum wheel weight 65Kg
- ▶ TFT video display
- ▶ Internal measuring gauge
- ▶ Weight and tool holder arm for rim distance & diameter
- ▶ Optional external data entry arm

# TBM V985A & TBM V985AE WHEEL BALANCER



## ORDERING INFORMATION:

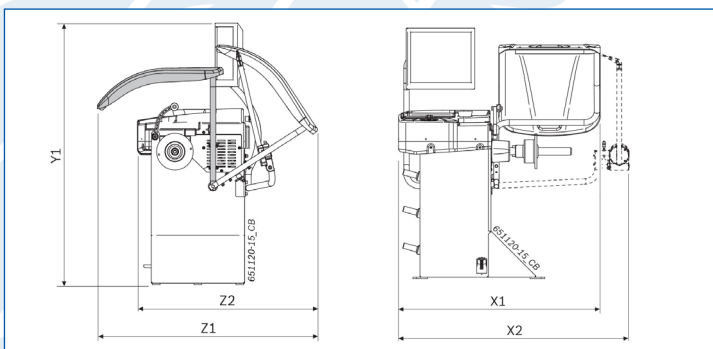
Electronic Wheel Balancer with video display  
(Internal data arm).....TBM/V985A  
(Internal & external data arm).....TBM/V985AE

## TECHNICAL SPECIFICATION:

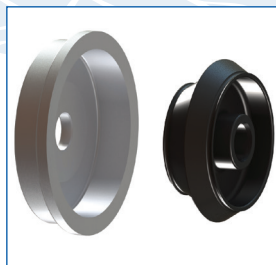
- ▶ Power Supply.....230V 1ph 50/60 Hz
- ▶ Balancing Speed.....208 rpm (50Hz) / 250 (60 Hz)
- ▶ Max. Wheel Weight.....65 Kg
- ▶ Max. Wheel Diameter.....31.5"/820mm
- ▶ Max. Wheel Width.....420mm
- ▶ Max. Rim Diameter.....6"-40" Automatic
- ▶ Max. Rim Width.....2"-20" Automatic
- ▶ Accuracy.....1g/0.05oz

## DIMENSIONS:

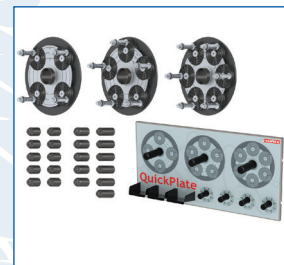
Max. dimensions (WxDxH) 1100 x 1270 x 1280 mm



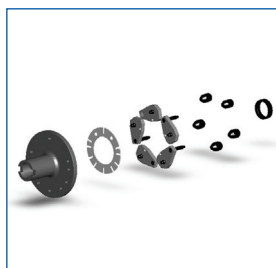
## OPTIONS AND ACCESSORIES:



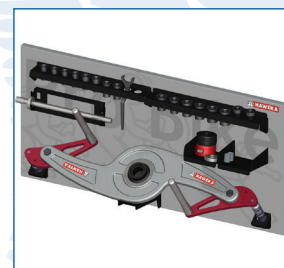
Light Truck Cone Set 88 - 174 mm  
Part No. HAW/150400091



Quick Plates 4,5,6, Hole  
Part No. HAW/210400001



Unilug Adapter  
Part No. HAW/405818108



Standard Motorcycle  
Adapter Kit  
Part No. HAW/805818000



Wheel Lift  
Part No. OA/900004



## TECALEMIT WHEEL BALANCER RANGE AT A GLANCE:

Feature	TBM/ 960A	TBM/ 960AE	TBM/ V985A	TBM/ V985AE	TBM/ 9165AE	TBM/V 9660AE
Max Wheel Diameter	31.5"	31.5"	<b>31.5"</b>	<b>31.5"</b>	47.5"	47.5"
Rim Diameter	8" - 26.5"	8" - 26.5"	<b>6" - 40"</b>	<b>6" - 40"</b>	10" - 26"	10" - 26"
Max Wheel Width	420mm	420mm	<b>420mm</b>	<b>420mm</b>	500mm	500mm
Max Wheel Weight	65Kg	65Kg	<b>65Kg</b>	<b>65Kg</b>	70Kg	70Kg
Speed	208 rpm	208 rpm	<b>208 rpm</b>	<b>208 rpm</b>	208 rpm	208 rpm
Internal Data Arm	YES	YES	<b>YES</b>	<b>YES</b>	YES	YES
External Data Arm	NO	YES	<b>NO</b>	<b>YES</b>	YES	YES
Display Type	LED	LED	<b>TFT Display</b>	<b>TFT Display</b>	Dual LED	TFT Display
Automatic Quick Selection Programme	NO	NO	<b>NO</b>	<b>NO</b>	YES	YES
Self-Diagnostic and Self -Adjustment Feature	NO	NO	<b>NO</b>	<b>NO</b>	YES	YES
Multiple Operator Programme	NO	NO	<b>NO</b>	<b>NO</b>	NO	YES
Power Supply	240v	240v	<b>240v</b>	<b>240v</b>	240v	240v

## CONTACT US FOR THE FULL RANGE OF ACCESSORIES

### ISSUE NO.: 8419

Tecalemit Garage Equipment Co Ltd  
Eagle Road, Langage Business Park  
Plymouth, United Kingdom, PL7 5JY

Sales:.....00 44 (0) 1752 219 111  
Service:.....00 44 (0) 1752 219 100  
Fax:.....00 44 (0) 1752 219 128  
Email:.....sales@tecalemmit.co.uk  
Web:.....www.tecalemit.co.uk

All information in this document is correct at  
time of publication. Tecalemit reserves the right  
to amend and alter specifications without prior  
notice. Please confirm any critical requirements  
with your supplier at time of ordering.

