

Sentinel 4.0t 2-Post Lift without base frame



GARAGE EQUIPMENT
since 1922



Part No.: SF/8893

*See overleaf for
more information*

- Baseless design with clear floor between columns
- Suitable for lifting light goods vehicles up to 4000kg GVW
- Symmetrical, 3-stage lifting arm design
- Automatic arm locking
- 24v dead man controls
- Overload safety valve

Sentinel 4.0t 2-Post Lift without base frame

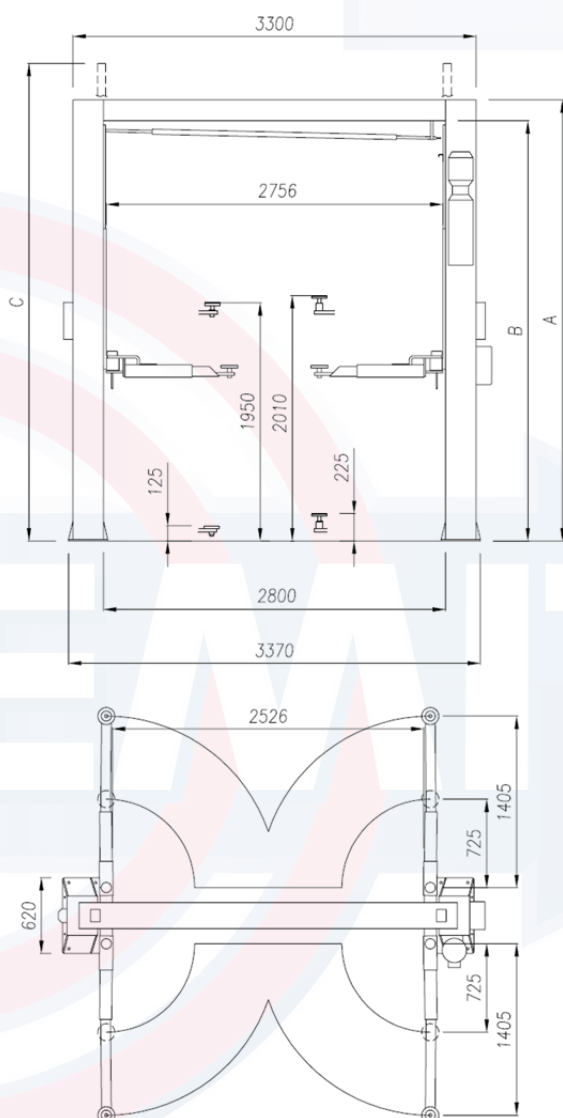


GARAGE EQUIPMENT
since 1922

→ About the SF/8893

The popular SF/8893 has been upgraded with a new symmetrical, 3-stage lifting arm design to accommodate an even more extensive range of long-wheelbase vehicles, passenger vehicles and car-derived vans. The SF/8893 offers clear access between the columns, with the hydraulic lines and safety cables carried in an overhead gantry.

The fixed internal clearance height is 4330mm; however, a further 500mm of workshop roof height is required to allow clearance for the installation of the lift. Lifting pad extensions for higher ground clearance vehicles are available.



	Version / Version	
	Standard	1500
A	4500	5100
B	4330	4930
C	3900	3900

→ Technical Specifications & Dimensions

Pad height min.....	125mm
Lifting height.....	1950mm
Motor supply.....	2.2kW
Drive through width.....	2526mm
Maximum load.....	4000kg
Maximum lifting time.....	35 secs
Weight.....	950kg
Power supply.....	3ph 400V 50Hz

→ Part Nos. & Ordering Information

Sentinel 4.0t Hydraulic Lift 3ph.....	SF/8893
Sentinel 4.0t Hydraulic Lift 1ph.....	SF/8893/1
Extended Height Gantry (5100mm Overall)	
Sentinel 4.0t Hydraulic Lift 3ph.....	SF/8893/1500
Sentinel 4.0t Hydraulic Lift 1ph.....	SF/8893/1/1500

→ Options & Accessories

High lift extensions 20mm (set of 4).....	OA/50740
High lift extensions 60mm (set of 4).....	OA/50733
High lift extensions 100mm (set of 4).....	OA/50734
High lift extensions 170mm (set of 4).....	OA/50735
High lift extensions 250mm (set of 4).....	OA/50736
"U" Chassis crutch adaptors (set of 4).....	OA/60264
"V" Chassis crutch adaptors (set of 4).....	OA/62556
Plates with pins (set of 4).....	OA/62557

Issue No.: SF/8893 Aug 2023

Tecalemit Garage Equipment Co Ltd, Eagle Road, Langage Business Park, Plymouth, United Kingdom PL7 5JY

Sales: 00 44 (0) 1752 219 111
Service: 00 44 (0) 1752 219 100
Fax: 00 44 (0) 1752 219 128
Email: sales@tecalemmit.co.uk
Web: www.tecalemit.co.uk

All information in this document is correct at time of publication. Tecalemit reserves the right to amend and alter specifications without prior notice. Please confirm any critical requirements with your supplier at time of ordering.

