

# Azur 3.0t 2 Post Lift with base frame



GARAGE EQUIPMENT  
since 1922



**Part No.: SF/9010/H**

*See overleaf for more information*

- Suitable for lifting most passenger cars and car derived vans
- Automatic arm locking
- 5-year warranty on self-lubricating Nylatron GSM main nuts
- Low minimum lifting pad height of just 90mm
- Foot/toe protection device
- Heavy-duty base frame
- Includes motor cover

# Azur 3.0t 2-Post Lift with base frame



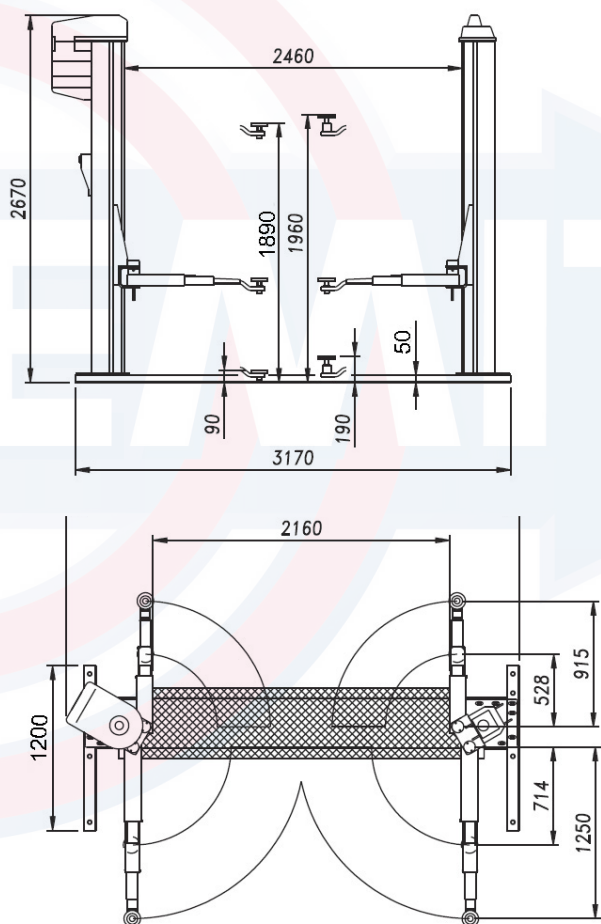
GARAGE EQUIPMENT  
since 1922

## → About the SF/9010/H

The SF/9010/H is a broad application electro-mechanical 2-post lift. It is suitable for lifting most passenger cars, car derived vans and many light commercial vehicles up to a gross weight of 3000kg.

The SF/9010/H has a heavy-duty column design fabricated from FE430 grade steel and powerful 4.5kW motor synchronises with the secondary column via a mechanical drivetrain. The lift's main nuts are manufactured from resilient Nylatron GSM and work in conjunction with the precision engineered rolled screw manufactured from high resistance steel.

This high specification lift is marketed around the world and is proven to deliver outstanding performance under almost every kind of environmental condition. Minimum floor requirements for installation are a level 150mm thickness of C25 concrete. Power supply of 400V 3ph via a 20amp RIT fused isolator.



## → Technical Specifications & Dimensions

Pad height min.....	90mm
Lifting height.....	1890mm
Motor supply.....	4.5kW
Drive-through width.....	2160mm
Maximum load.....	3000kg
Maximum lifting time.....	55 secs
Weight.....	565kg
Fused isolator rating.....	20amp
Power supply.....	3ph 400V 50Hz

## → Part Nos. & Ordering Information

Azur 3.0t 2-Post Mechanical Lift 3ph with base frame .....	SF/9010/H
--	-----------

## → Options & Accessories

High lift extensions 20mm (set of 4).....	OA/50740
High lift extensions 60mm (set of 4).....	OA/50733
High lift extensions 100mm (set of 4).....	OA/50734
High lift extensions 170mm (set of 4).....	OA/50735
High lift extensions 250mm (set of 4).....	OA/50736
"U" Chassis crutch adaptors (set of 4).....	OA/60264
"V" Chassis crutch adaptors (set of 4).....	OA/62556
Plates with pins (set of 4).....	OA/62557

## Issue No.: SF/9010/H Aug 2023

Tecalemit Garage Equipment Co Ltd, Eagle Road, Langleigh Business Park, Plymouth, United Kingdom PL7 5JY

Sales: 00 44 (0) 1752 219 111  
Service: 00 44 (0) 1752 219 100  
Fax: 00 44 (0) 1752 219 128  
Email: sales@tecalemite.co.uk  
Web: www.tecalemit.co.uk

All information in this document is correct at time of publication. Tecalemit reserves the right to amend and alter specifications without prior notice. Please confirm any critical requirements with your supplier at time of ordering.

